

St Oswald's Parish Church

Lower Peover



May 2024

50p



Full details of services at St Oswald's and St Lawrence's can be found on the website peoverchurches.org.uk

Occasional Offices

Weddings: Please contact Norman Withenshaw: 07771 651888

Funerals and Burials: Please contact Mrs Pam Adlington or Norman Withenshaw

Baptisms: Please contact Norman Withenshaw: 07771 651888

Church Officers:

Vicar:

Fr Murray Aldridge-Collins

The Vicarage, Crown Lane, Lower Peover. Tel: 01565 723624

Churchwarden:

Norman Withenshaw, Tabley Brook Cottage, Pickmere Lane, Knutsford,

Cheshire, WA16 0HS. Tel. 07771 651888. norman.withenshaw@yahoo.co.uk

There is still a vacancy for one churchwarden.

Hon Secretary of PCC: Mrs Felicity Wilshaw, 46 Holly Tree Road, Plumley,
Knutsford. WA16 0UJ. Tel: 01565 722527

Hon Treasurer of PCC: Mrs Gerry Jones, Allostock Cottage, Middlewich Road,
Allostock, Knutsford. WA16 9JG. Tel: 01565 722064/07884 252887

Organist: Mr David Tredwell. Tel: 01565 634340

Lower Peover C of E Primary School Head: Mrs Sharon Dean Tel 01625 383292

Magazine Editor: Mrs Lynda Boag-Munroe Tel: 01477 534291
lyndaboagmunroe@yahoo.co.uk

In our prayers...

At all our services we ask God's blessing on those known to us who are ill or infirm, particularly those with whom we have close connections as members of the congregation. If you would like to be named in our prayers of intercessions because you are undergoing treatment or know of someone who has requested prayers, please contact one of the churchwardens.

Dear Friends,

In May churches all across the world think about several things, the Role of the Blessed Virgin Mary, Gods role in creation, celebrating our farming community and more significantly perhaps, Ascension and Pentecost: two significant festivals in the church year but ones whose significance has not really made it into wider public consciousness.

We of course are more than acquainted with the symbols of Christmas and Easter (both of which saw our church packed to the rafters) Christmas trees and chocolate Easter Eggs, adorned St Oswald's during their respective seasons, but we do not really have such recognisable adornments for Mays celebrations. Only goodness knows what we would use if we did? Perhaps we might have Ascension Day floating slippers or Pentecost flaming hats!

These two festivals when we mark the end of Jesus' resurrection appearances and his ascent to heaven (Ascension Day) and the pouring out of the Holy Spirit (Pentecost) should really have more kudos as they both play key roles in the telling of the Christian story.

For a number of years the Church of England has marked these festivals by asking us to be more conscious about praying for each other during the days between Ascension and Pentecost we will be doing so at St Oswald's again this year.

Of course, one of the wonderful things about the Christian faith is that we can always pray. It does not need to be at a special festival, or in a special place or with special words. God is always there ready to meet us when we pray.

After the first Easter, when Jesus had ascended to heaven to return to his Father, his followers continued to meet together for prayer and companionship. You can read all about this in the Acts of the Apostles written by Luke who also wrote one of the four gospels. At that time there were no church buildings. They did not have a set form of worship and the early Christians met in houses, probably of those wealthy enough to have room to accommodate a number of people. Large groups may well have had to split up into different venues to enable everyone to fit in. In the early days, the Lord's Supper also known as Holy Communion, the Eucharist or Mass took place in the course of a communal meal. Everyone brought what food they could and it was shared together. Meeting and eating, sharing food and sharing worship were at the heart of the early church and a way to put care and prayer into action.

In a similar way St Oswalds 'Fun Committee' will be holding their next fun event, a fish and chips quiz night at the Bells of Peover (For Ticket Information see the posters or leaflets in church; it looks to be a fantabulous evening so get your tickets quickly!)

It is our hope that May will therefore not only encourage us all to be more mindful of the needs of each other, but also be a month of increased hope, offer us a sense of the miraculous, and this year more than ever before... FUN as we celebrate our incredible faith, our villages and our welcoming church family together!

Many blessings

Fr Murray

Christian Aid Week – 12th – 18th May

Christian Aid is urging its supporters to “push back against poverty” this Christian Aid Week by bearing in mind the coming General Election.

The charity says that “people hoping to represent us” in the next UK Parliament will soon be on our doorsteps, “vying for our vote”.

Christian Aid says that these would-be MPs will: “be in listening mode, keen to hear what makes the voters in their community tick.” And so, urges the charity, Christians can use this opportunity to “show them that your church cares about poverty, and tell them that you expect them to act on poverty too, if they are elected.”

This year the charity has launched the ‘70K Challenge for May’, encouraging its supporters to do a sponsored “Move 70km during May. Walk, run, cycle, however you move is up to you.” Details at: <https://fundraise.christianaid.org.uk>

News and events can be found on our website www.peoverchurches.com



Smartphone users can access the site by scanning the QR code.
also find a full calendar of events on

You can

<http://www.achurchnearyou.com/lower-or-nether-peover-st-oswald/>

**THE BENEFICE OF PEOVER - CALENDAR OF SERVICES for MAY
at St Oswald's and St Lawrence's churches**

BCP-Book of Common Prayer
(Traditional language service using the King James Bible)

CW-Common worship
(Modern language service using the Revised Standard Bible)

AA- All Age Worship
(A 'modern language/less formal' interactive service often partially led by our children's church using the International Children's Bible)

Each Wednesday at 10am - CW 'said' Holy Communion followed at 10.30am by a service of prayer and anointing for Healing and Wholeness. (St Oswald)

Sunday 5th May: 6th Sunday of Easter and Rogation

8 am BCP Holy Communion (St Oswald)
9.30 am CW Morning Prayer (St Lawrence)
11 am AA Worship (St Oswald)

Sunday 12th May: Sunday after the Ascension

8 am BCP Holy Communion (St Oswald)
9.30 am CW Morning Prayer (St Lawrence)
11 am CW Holy Communion with separate children's church (St Oswald)

Sunday 19th May: Pentecost

8 am BCP Holy Communion (St Oswald)
9.30 am CW Holy Communion (St Lawrence)
11am AA Communion Service (St Oswald)

Sunday 26th May: Trinity Sunday

8 am BCP Holy Communion (St Oswald)
9.30 am CW Morning Prayer (St Lawrence)
11am CW Holy Communion with separate children's church (St Oswald)

Sunday 1st June: Trinity 1

8 am BCP Holy Communion (St Oswald)
9.30 am CW Morning Prayer (St Lawrence)
11 am AA Worship (St Oswald)

Please note that services may change so please check the website.

From the register

Burial of Ashes

Heather Louise Henry
Roger Scott Bingham
Ann Jane Mulatero
Dorothy Susan Hulse

Baptism

Henry Thomas George Stephen Dutton
Leo Derek Fearon

Funeral

Walter Emile Hardman

Prayer for Schools Fortnight – 6th to 20th May

Our local schools are busy places, and draw in many people, especially students, teachers, governors, parents, caterers, and school grounds support services. These people need our prayer, as they face many daily challenges.

And so it was that four years ago a network made up of Churches Together England, CARE, Youth for Christ, Scripture Union, New Generation, the Association of Christian Teachers, came together to launch the Prayer for Schools Fortnight.

It now exists to promote prayer for schools in partnership with prayer groups, churches and Christian organisations. The vision is to see all 30,000 schools in the UK being regularly prayed for.

The theme this year is Running the Race, based on Hebrews 12, and highlighting the perseverance and team mentality needed for schools to operate successfully.

Mike Simmonds, director and education consultant of Go Ministries which supports governors in schools, said: "Schools have almost always been at the heart of the Church's mission. Praying for teachers, other staff, governors, and children must surely underpin our hopes and vision that the next generation will flourish in every way possible.

Lower Peover Annual Church Fete

The Annual Fete is to be held on Saturday, 6 July, 2024 on the school field from 12.00 until 3.00pm. We need help to run the stalls, help in the tea room, provide cakes, raffle prizes, Tombola prizes, gazebos.

We still have a little time to go, but put a note in your diaries and ring me, or any of the Fete committee if you can help.

Many thanks Joan Drye. Tel: 07812655493

The following real-life answers to various exam papers explain why teachers need long holidays!

What is a nitrate—Cheaper than a day rate.

What was Sir Walter Raleigh famous for? —He is a noted figure in history because he invented cigarettes and started a craze for bicycles.

Name six animals which live specifically in the Artic. — Two polar bears. Four seals.

Name the wife of Orpheus, whom he attempted to save from the underworld. — Mrs Orpheus.

Where was the American Declaration of Independence signed? — At the bottom.

State three drawbacks of hedgerow removal. — All the cows will escape. The cars drive into the fields. There is nowhere to hide.

What is the meaning of the word varicose? — Close by.

Daily Hope phone line

Daily Hope offers music, prayers and reflections as well as full worship services from the Church of England at the end of a telephone line. The line is free and available 24 hours a day on 0880 804 8044.

Dear Lord,

May is the loveliest of months – and this year, as we welcome the blossom and the beauty of late Spring, we also welcome Your Holy Spirit afresh, as we celebrate Pentecost.

May we open our hearts to receive Your Spirit, as Your people did on that first Day of Pentecost. May we be filled and empowered and emboldened to witness to Your goodness and love.

May we be transformed by Him and reflect Your transforming grace to the broken world in which we live. May people who meet us ask, “What does this mean?” May they turn to You and hear You speaking in ways they can understand.

Without Your Holy Spirit we can do nothing. With Him living in us, we can do all things.

Come Holy Spirit, come to us, we pray. In Jesus’ name. Amen.

By Daphne Kitching

Prove it

Prove it they cried, that You’re the Messiah
Wouldn’t He come as a conquering king?
Not as a poor man riding a donkey
How do you think we’d believe such a thing?

Wherever He went large crowds would follow,
He calmed the storm and turned water to wine,
The lame could walk and the deaf made to hear,
Fully a man and yet also divine.

His teaching had never been heard before,
He fed the five thousand with fish and bread
Gave sight to the blind and lepers were healed,
He cast out demons and raised the dead.

He died on a cross to take away sin
Rose up from the grave, what more could He do?
To prove of His love for all of mankind
Believe it or not it, it’s all up to you. *By Megan Carter*

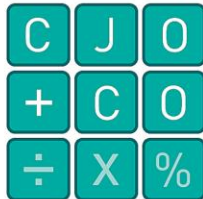
Probate and Taxation services

If you need assistance applying for probate, we at C J O'Brien + Co are here to help and support you.

In addition we provide a comprehensive personal taxation service including lifetime tax planning.

Please contact Cathryn Ruddock on 01477 571902

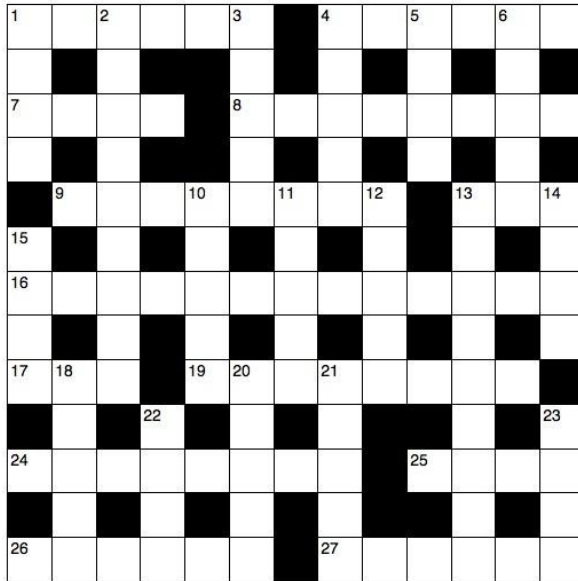
Chartered Accountant & Chartered Tax Adviser



T: 01477 571902
M: 07971 281692

C J O'BRIEN + CO

Email: cjobrienandco@btinternet.com



ACROSS

- 1 One who owes money, goods or services (Isaiah 24:2) (6)
- 4 'A good measure, pressed down, — together and running over' (Luke 6:38) (6)
- 7 Continuous dull pain (Proverbs 14:13) (4)
- 8 This bread contains yeast (Amos 4:5) (8)
- 9 'But take heart! I have — the world' (John 16:33) (8)
- 13 And the rest (abbrev.) (3)
- 16 What Paul was accused of by Tertullus, the high priest's lawyer, in his trial before Felix (Acts 24:5) (13)
- 17 Rap (anag.) (3)
- 19 Founder of the Jesuits in 1534 (8)
- 24 'For where your — is, there your heart will be also' (Luke 12:34) (8)
- 25 The first word written on the wall during King Belshazzar's great banquet (Daniel 5:25) (4)
- 26 'We all, like sheep, have gone — ' (Isaiah 53:6) (6)
- 27 One was given in honour of Jesus in Bethany (John 12:2) (6)

DOWN

- 1 'The blind receive sight, the lame walk, the — hear, the dead are raised'
(Luke 7:22) (4)
 - 2 Conduct (Colossians 1:21) (9)
 - 3 In the Catholic and Orthodox traditions, the body of a saint or his belongings,
venerated as holy(5)
 - 4 'Like a — of locusts men pounce on it' (Isaiah 33:4) (5)
 - 5 Very old (Genesis 44:20) (4)
 - 6 In Calvinist theology, one who is predestined by God to receive salvation (5)
 - 10 How Nicodemus addressed Jesus when he visited him one night (John 3:2) (5)
 - 11 Sea (Psalm 148:7) (5)
 - 12 'I will — you, my God the King; I will praise your name for ever and ever'
(Psalm 145:1) (5)
 - 13 One of the groups of philosophers that Paul met in Athens, who disagreed with his
teaching about the resurrection (Acts 17:18) (9)
 - 14 Barred enclosure (Ezekiel 19:9) (4)
 - 15 'Since we live by the Spirit, let us keep in — with the Spirit' (Galatians 5:25) (4)
 - 18 Cares (anag.) (5)
 - 20 Garish (Ezekiel 16:16) (5)
 - 21 'So God said to Noah, "I am going to put — — to all people"' (Genesis 6:13) (2,3)
 - 22 Just (2 Corinthians 6:13) (4)
 - 23 'The — of the Lord is the beginning of knowledge' (Proverbs 1:7) (4)
-

Knutsford Floral Design Club

Knutsford Floral Design Club meets every third Wednesday in the month at 1.30pm for 2pm in Plumley Village Hall (except June - the second Wednesday, August – no meeting, and December when we hold our Christmas lunch)

We have a floral demonstration by qualified demonstrators, followed by tea and biscuits. Visitors are very welcome for a fee of £10.

For more information telephone Lynda on 01477 534291

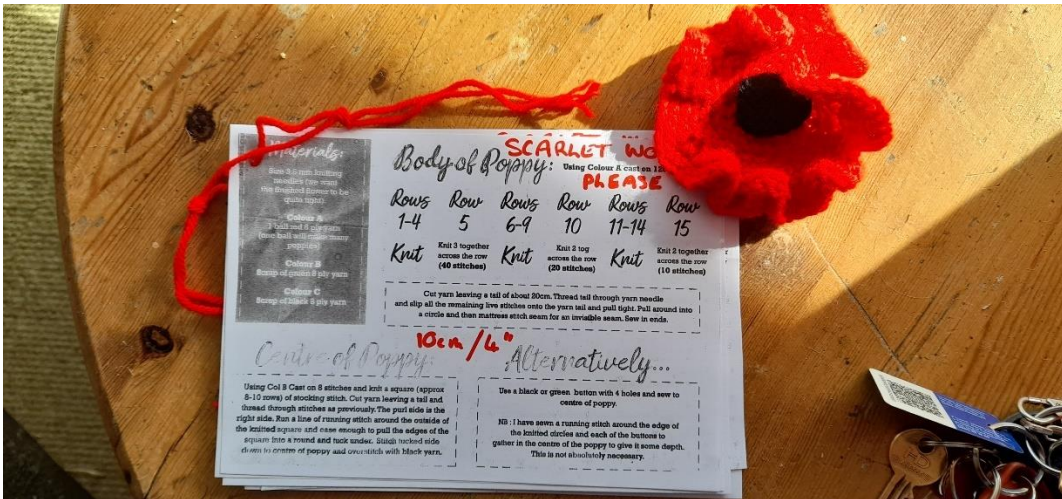
Great faith is not the faith that walks always in the light and knows no darkness, but the faith that perseveres, in spite of God's seeming silence, and that faith will most certainly and surely get its rewards. —*Fr Andrew SDC*

**Lower Peover WI – meets on the first Wednesday of the month
In Lower Peover School at 7.30pm
For information contact Sally Geake LP 722489**

**Plumley WI meets on the first Thursday of the month
at 7.30pm in Plumley Village Hall**

**Over Peover WI meets on the last Thursday of each month
at 7.30pm in Over Peover Village Hall.
Contact June Leach – 07500 250969**

Poppies for D Day Celebrations



Poppies are required by 1 June, to decorate the church for the D Day event. For more information contact Sally Aspin 01565 722272. There are some patterns in the church porch.



**Independent Family
Funeral Services Since 1967**

Simple Funerals



Bespoke & Tailored Funerals



Pre-paid Funeral Plans



24 Hour Emergency Service

Call: 01565 632 644

or

07788 427839



**45C KING STREET
KNUTSFORD WA16 6DW
www.whiston-britland.co.uk**

The Rectory - St. James the Least

My dear Nephew Darren

It never fails to amaze me how, in church life, an issue can suddenly become an Issue. In the last month, we have acquired an Issue: a proposal to convert a space at the back of church into a kitchen. Inevitably, battle lines have been drawn and trenches dug. Attendance at church council meetings has soared and unofficial sub-committees meet in the car park after Services. It is obvious that feelings are running high, because people have become remarkably polite to one another.

Some who are wildly in favour see it as an opportunity of being able to leave the pews ten minutes early, in order to get ready for the rush for weak coffee and damp biscuits. I can already hear in my mind the final hymn being drowned by kettles being filled, biscuit tins opened, cups thunderingly placed on saucers, while the volunteers discuss the dress sense of others in the congregation in deafening whispers.

I was a little surprised to hear that Colonel Wainwright was all in favour – until I realised that it would give him a place to totter into to read his newspaper once he got bored with my sermon, which usually seems to happen in the first minute. Naturally, smaller turf wars have broken out alongside the major battle. There is conflict about whether we should get new crockery, what colour carpeting tiles would look right – and most importantly of all, who will take charge of the coffee rota.

Others are totally against the project: the treasurer dreads the thought of signing yet more cheques, the churchwardens worry about removing pews which have quietly hidden the dry rot, and the theologically angst-ridden agonise about the fact that St Paul never mentioned coffee after Sabbath worship.

Naturally, I encourage all sides, especially if it will bring any possibility of progress to a halt. I proposed bringing in flasks of coffee, thus stopping anyone being able to escape before the end of the Service; I suggested drinks being brought to people in the pews, thus ruining the Colonel's hopes of finding a safe haven; I organised a group to study High Priestly attitudes to refreshments in the Temple in Jerusalem in Leviticus.

I am sure that by the time all these groups have come up with their conclusions, we will have safely moved on to fight the next Issue.

Your loving uncle, Eustace

	2				1	4		6
9					3	8		
				4				3
	6		2					
	5						4	
					9		7	
6				2				
		3	9					1
8		1	5				9	

© 2008 KrazyDad.com

Flower Rota

5 May - Ellie Beharol
 12 May - Marilu Knowles
 19 May - Nerys Bradford
 26 May - Rosemary Warnes

£8.5m for parish outreach

The Church of England has awarded nearly £8.5 million for projects to help churches spread the Christian faith, including parish renewal programmes and children's and youth work in rural and urban areas.

Grants have been approved for mission from the north of England to the Kent coast, much of it in low-income areas, covering parish revitalisation programmes, 'hubs' for children's and youth work, church planting and the expansion of a model of family church that has grown 'exponentially' after it was set up in 2020.

The awards, to Canterbury, Durham, Hereford and Southwark Dioceses, have been made by the Church of England's Strategic Mission and Ministry Investment Board (SMMIB).

St Oswald's Church

Memorabilia goods for sale

There are various items including postcards, tea towels, aprons, mugs and greeting cards for sale at the back of the church

Memorabilia price list

Many thanks for supporting the upkeep of this beautiful old church.

Please put your money in the pot which is emptied daily. However, if you have spent a larger sum of money, and prefer to put it in the wall safe in the Bell Tower that is appreciated. Please use the envelopes provided. It is also possible to make contactless card payments using the device adjacent to the display of goods.

Greetings Cards: 'Millennium Window' design (blank inside):

Single Card - £1.25 each. Pack of 5 cards: - £5 per pack

Photographs of the church cards: Pack of 2 - £2.50

Postcards - three designs: 'Millennium Window', 'The Church by day' and 'St. Oswald's on a starry night' all 50p each

Aprons

'Church and Flowers' design - Green or Blue on white - £5 each

Tea Towels

'Celebration with Flowers' design - Black on Cream or Blue on White - £5 each

Mugs - Bone china, dishwasher and microwave proof

'Celebration with Flowers' design - Blue on White only - £7 each

Booklet – 'Beside the Bright Stream' - £2 each

Food Basket for Hope Central

As a church we appreciate that a lot of people are struggling at this time. So, what can we do practically to help?

From Sunday 6th November, a basket will be placed in Church on a weekly basis for non-perishable food donations. This will be taken each Monday for distribution by Hope Central, a local Christian Charity.

Hope Central is an Ecumenical project based in St John's Church Knutsford and covers North East Cheshire, so our donations will be distributed locally. It is a Christian charity committed to bringing hope and relieving poverty in Cheshire East.

At Hope Central we recognise that everyone needs a helping hand at some point and we want to provide support to anyone in need. We do this because we believe in a heavenly Father who loves everyone unconditionally, and we want to express that love in practical ways by supplying food to people in difficult circumstances and helping people address underlying reasons that contribute to their distress.

As well as the usual staple tins and packet foods which are so necessary, why not put a few extra goodies in for Christmas. We all need treats.

Hope Central was established in 2019, supported by three churches: Vine Life Wilmslow, St Chad's Handforth and St John's Knutsford.

As well as meeting people's immediate need for food, we also want to support people to get back on their feet, so as well as providing a Foodbank we offer a Job Club, Money Course, Life Skills Course, Fresh Start Course, Debt Centre, Hope Centres and Refugee support.

All the staff and volunteers working with Hope Central are passionate about seeing lives changed for the better. As Christians we believe in a Heavenly Father who loves everyone unconditionally and we want to express that love in practical ways, especially to people who find themselves in difficult circumstances. Everyone needs a helping hand at times. So please donate.

Thank you. A link for further information is attached below.

hopecentral.org.uk

Editor: The Revd Dr Jo White considers the stones and mortar...

Reflecting Faith: the church as a building

Today's church buildings are rich and varied in their designs, sizes, materials, plans and groupings; from large cruciform churches to simple single room designs; from red brick to stone, and so on.

I wanted to look up some information about the fact that today's church buildings, although they may be 'modern', are usually built upon or very close to a previous church building. In other words, they stand quite literally in a long succession of church buildings.

However, on entering 'church building footprint' into the computer search engine, it responded in a related but unexpected, to me, way: *'The Energy Footprint Tool is a great way of monitoring your church building's carbon usage and energy efficiency.'*

A very real issue for today's world! - and one we are very conscious about when we enter the building on a Sunday morning to find, even with the heating turned on for a number of hours, that it is considerably cooler than our own centrally heated homes.

Whilst it is theologically wonderful to have high ceilings, we can see how future remodelling might well lower the ceilings, bring in the walls, and shrink the glassed areas. And so it has been through the ages – church buildings have constantly been amended.

When you look carefully at a church that is more than a few hundred years old, in any part of the world, you can trace the development of its use by its architecture. Perhaps you will see a door or window bricked up or a new one opened; the widening of the nave by the addition of arches and one or more aisles; change in stone or building materials as later technology was available or even a change in design as new techniques came into safe use.

This month:

Have a look at a couple of local churches and spot the changes in their buildings over the years. Why do you think they took place? What changes would you make and why?

Safeguarding

St Oswald's and St Lawrence's take their duty and obligation to protect all extremely seriously. We have adopted the national Church of England's robust procedures and guidelines. You can find out more about the national policies and procedures at www.churchofengland.org/safeguarding. The Parish Safeguarding Officer for St Oswald's is Tracy Knott. If you have any safeguarding concerns or issues concerning a safeguarding matter within the parish please contact Tracy in confidence.

HOPLEY

TYRES Ltd

INDEPENDENT TYRE SPECIALISTS

A LOCAL FAMILY BUSINESS ESTABLISHED OVER 45 YEARS

- * CAR, VAN & 4X4 TYRES
- * MOBILE TYRE FITTING AVAILABLE
- * LARGE TYRE STOCKS - ALL MAKES
- * WHEEL ALIGNMENT
- * WHEEL BALANCING
- * PUNCTURE REPAIRS
- * BATTERIES

KNUTSFORD ROAD, CRANAGE, HOLMES CHAPEL, CW4 8ER

TEL: 01477 533642 / 533285



Crossword Answers

ACROSS: 1, Debtor. 4, Shaken. 7, Ache. 8, Leavened. 9, Overcome. 13, Etc. 16, Troublemaking. 17, Par. 19, Ignatius. 24, Treasure. 25, Mene. 26, Astray. 27, Dinner.

DOWN: 1, Deaf. 2, Behaviour. 3, Relic. 4, Swarm. 5, Aged. 6, Elect. 10, Rabbi. 11, Ocean. 12, Exalt. 13, Epicurean. 14, Cage. 15, Step. 18, Acres. 20, Gaudy. 21, An end. 22, Fair. 23, Fear.

St Oswald's Triptych

Behind the altar in the Shakerley Chapel is a triptych painted by Alfred Charles Hemming sometime between 1904 and 1933.

It is unknown where it came from or how it came to be in the possession of the church.

The triptych is a framed oil painting on wood and to the best of our knowledge it had never been restored.

There were a considerable number of wax blobs along the bottom edges of all three panels, presumably from when candles on the alter had been blown out.

There was no evidence of a layer of varnish over the painting but there was a thick layer of surface dirt that had accumulated over time.

In December 1997 Julia Dalzell, an oil painting restorer, was asked by the church to examine the triptych and provide a quotation for restoring the painting. She estimated that it would cost between £1,500 and £2,000 but the restoration was never undertaken.

In December 2020 reinvigorated by Father Murray's enthusiasm for the painting we decided to get a further quotation for the restoration of the triptych. In October 2021 Vanessa Andrew, a fine art conservator, was asked to examine the triptych with a view to having it restored; however, her quotation for the restoration was £4,000 so again the work was not undertaken.

Undeterred an application was made to the National Heritage Memorial Fund and the TV programme 'The Repair Shop' to see if either organisation would help with the restoration but both came to nothing.

Then in October 2023 Ged Coates researched the possibility of restoring the triptych ourselves and discovered that a picture cleaning paste was available on the internet. Rosemary Warnes then volunteered to undertake the task of cleaning the triptych so we had a plan.

The triptych was removed from its frame and each wooden panels was carefully transported to Rosemary's studio where she painstakingly cleaned each panel.

After many hours of work the triptych was secured into the newly restored frames and replaced in the Shakerley Chapel.

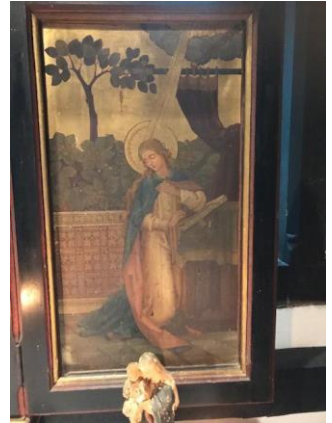
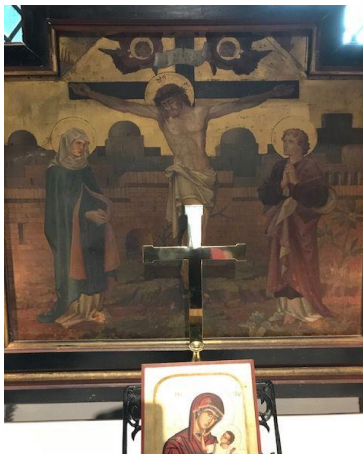
On 2nd December 2023 Father Murray unveiled and blessed the restored triptych in front of a small congregation assembled in church.

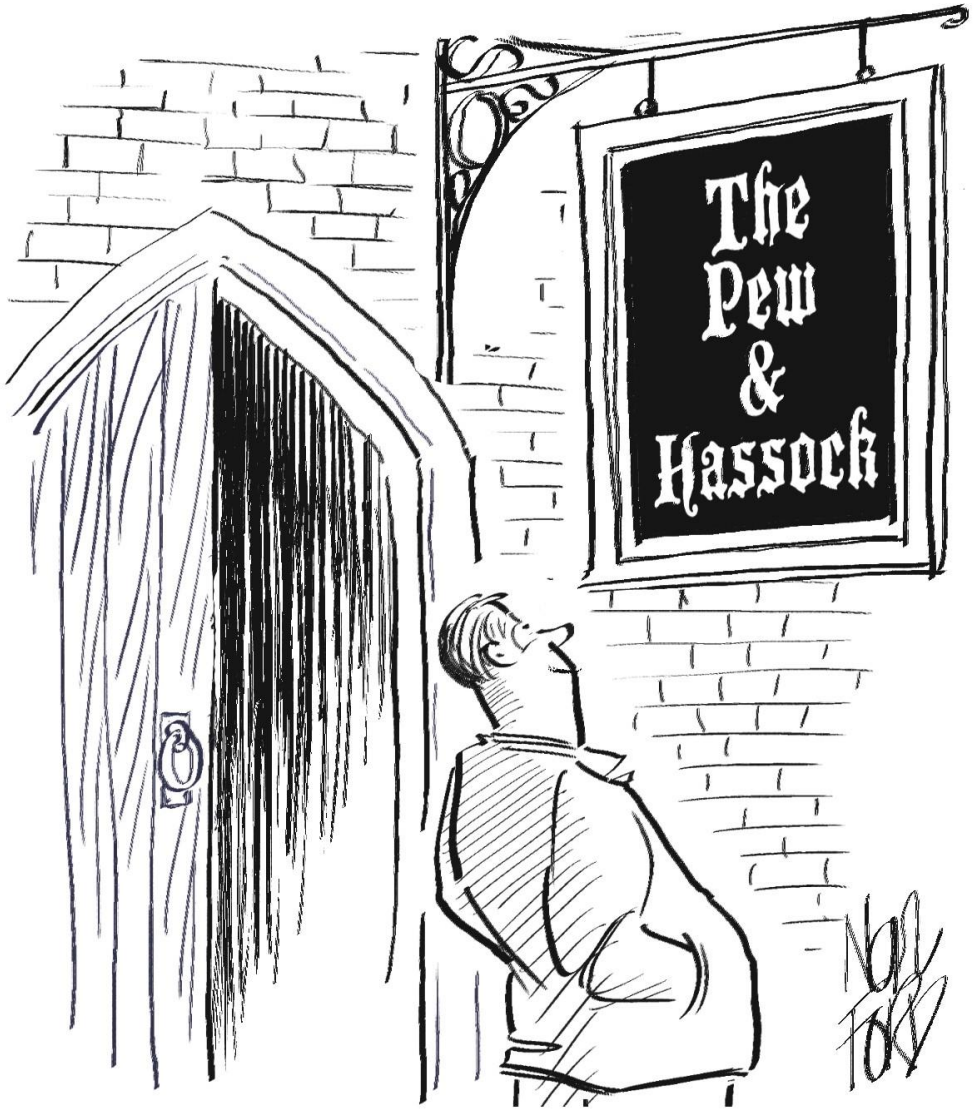
The next time you are in church make a point of admiring the restored triptych in all its glory in the Shakerley Chapel.

BEFORE



AFTER





Changing the name from 'St Mark's Parish Church', resulted in a big increase in the number of men attending services

Please join the ‘St Oswald’s Lower Peover 100 Club’

Dating from 1269, St Oswald’s church has been central to the village of Lower Peover for centuries. Throughout that time, it has been the spiritual home of many people, and not just those living in the village itself. It still fulfils that role today, a peaceful haven in an ever busier and complicated world. As a Grade 1 listed building, it enjoys a setting of particular importance, and the assumption is that it always will be. But escalating costs mean that we can no longer take that for granted. Buildings such as St Oswald’s are hugely expensive to maintain and ever-increasing running costs need to be found.

It is a sobering thought that our Parish Share (the money we pay to Chester Diocese for our church and a vicar) is £51,395. That is £988 each week. That is before any lighting, heating, maintenance etc. is taken into consideration, and, contrary to what many people still think, the State does **not** pay towards a church’s upkeep.

We launched the 100 Club in May 2008 and membership currently stands at 71, although it has been as high as 106. The club currently raises about £2,500 each year (after prizes) and really does make a huge difference to our resources. So far it has raised over £25,000 for the running costs of our church. **And all for the minimal cost of £1 per week to members!**

The 100 Club works in this way:

We collect £1 a week from each member per number held, which can be paid either as an annual fee of £52, or £13 per quarter, by standing order. Members are allocated individual numbers and each month two numbers are drawn. The first receives a prize of £70, the second receives £30. The remainder of the proceeds go to the church. You may individually hold more than one number and indeed, past winners have often had multiple holdings. It really is as simple as that! The 100 Club is designed to appeal to regular churchgoers and those people who may not be able to worship regularly with us, but who also think it is important that the church remains open as an important part of village life. We really would like to get our membership back up to at least 100 and hope that if you are reading this you may feel able to help – all for £1 per week! Please do join the 100 Club by completing the membership form at the back of this magazine or online at our website, and simply post it back to me. Many congratulations to all our winners – and our thanks to all members who are currently supporting the 100 Club. Stay safe and thank you.

Norman Withenshaw – (Lottery Registration No. 08/LO/77)

• Tickets • Invites • Programmes • Clothing • Company Signs • Vehicle lettering

Call us today for a free quote....

....or call in to discuss your job with the team!

● ● ●
Passion 4 colour

▶ DESIGN

▶ PRINT

▶ SIGNS

williams

● ● ● Design and Print

Find us on facebook 

01606 837040

sales@williamsdesignandprint.co.uk | www.williamsdesignandprint.co.uk
The Glass Place | Byley Road | Byley | Cheshire | CW10 9NF

3	2	7	8	9	1	4	5	6
9	1	4	6	5	3	8	2	7
5	8	6	7	4	2	9	1	3
4	6	9	2	7	5	1	3	8
7	5	2	3	1	8	6	4	9
1	3	8	4	6	9	2	7	5
6	9	5	1	2	7	3	8	4
2	7	3	9	8	4	5	6	1
8	4	1	5	3	6	7	9	2

I wish to join the 'St Oswald's Lower Peover 100 Club'

Name

Address

.....

.....Post codeTel

No.....

I would like to buy number(s) at a cost of £1 per week.

*I enclose a cheque, made payable to 'St Oswald's Church Lottery Account' for £52 per number for a full year, or * I have completed the attached Standing Order and will pay at the rate of £13 per number each quarter.

*Delete as appropriate

Signed Date

Please return this page and the Standing Order instruction below to:

Norman Withenshaw - St Oswalds Church Lottery Account

STANDING ORDER

To: The Manager

Bank	
Address	
Sort Code	/ /
Account Number	
Account Name	

Please pay to the account of **St Oswald's Church Lottery Account**,
Sort Code **01-09-17**. Account Number **66537290**

The sum of £ * on the 1st day of and quarterly thereafter.

SignedDate

* Insert your regular payment (£13.00 for each number you wish to hold)

HIRE PLUMLEY VILLAGE HALL

Excellent facilities

Disabled facilities. Superb floor - ideal for dancing.

A perfect, modern venue for all your special occasions.

CAVENDISH

WINDOW CLEANING CO.

FULLY INSURED

For a quote, ring Tony Foster



on 07802 555520

We also clean:-

***Gutters, PVC windows, conservatories
(including roofs) & have special expertise in
leaded and Georgian windows.***

Dodgson's Funeral Service

Independent Family Funeral Director

For a professional and compassionate service
Personally available to help anytime, every day without exception
Part of the community for generations

25 Manchester Road • Knutsford • Cheshire • WA16 0LY

01565 634251 • email info@dodgsonfunerals.com

Tributes can be left on our website

www.dodgsonfunerals.com

AdvanceMobileTyres

a tyre service that comes to you

Graham Wood

Director

Acer House

Hartford Road

Davenham, Northwich

Cheshire. CW9 8JF

Tel: 01606 46890

Mobile: 07967 967576


Science, Maths & Specific learning difficulties

NKTUTORING


Cheshire

Nicola Kelting BSc MSc PGCE MRSB



 07985 588061

 nicola@nktutoring.co.uk

Connect with me  

**Drop me a line to
discuss how I can help**

A' Level Biology
GCSE Science & Maths
KS3 Science & Maths
Primary Maths & Science

LICENSED BOARDING KENNELS



**PORTFORD FARM
COMMON LANE, LACH DENNIS
NORTHWICH**

**CONTACTS: T.R. AND L. CLARE
Tel: 01565 722207
Mobile 07713 030719**

PROPERTY TO LET

SELF CATERING ACCOMMODATION

DO YOU NEED

**A temporary home because of business,
a holiday break,
extra space when your family visits
OR
maybe you are between homes**

**Properties are located between Knutsford and Northwich
are furnished to a high standard and are fully equipped.**

**If you would like further information
Tel 01565 722807**

Plumley Village Stores & Post Office



Are you a Happy Shopper?



Visit us for Local

Cheese, honey, eggs,

Vegetables, Jams/marmalades, pickles

Cakes and biscuits



[Agent for Fairtrade goods by Traidcraft.](#)

Help make the world a better place from your own home – look for this mark on Fairtrade products.

Apply for a Fairtrade stall at your event

At your service for

Fax / photocopying

Phone top-ups / Gift vouchers

Dry cleaning / laundry

Tel: 01565 722277

Fax: 01565 723177

e-mail plumleystores@btconnect.com

Follow us on Facebook

Join us during 2024 The Smoker

The Smoker is a beautiful 400 year old iconic thatched coaching inn where you can enjoy quality food and drink in relaxed and inviting surroundings.

We pride ourselves on offering a range of quality cask ales and beers, an extensive selection of wines along with a menu packed full of mouth-watering dishes and daily specials for you to enjoy

Why not come and enjoy our beer garden
and fantastic NEW play area

Chester Road, Plumley, Knutsford WA16 6TY | Tel: 01565 722338 | www.thesmokerplumley.co.uk

The Smoker

TEL: 01565 722338
www.thesmokerplumley.co.uk

Enjoy
25% OFF
your total food bill

*Offer valid until 10th June (inclusive).
Excludes Bank Holidays. Terms &
Conditions Apply. LPCM/2024*

The Smoker

TEL: 01565 722338
www.thesmokerplumley.co.uk

Enjoy
25% OFF
your total food bill

*Offer valid until 10th June (inclusive).
Excludes Bank Holidays. Terms &
Conditions Apply. LPCM/2024*

The Smoker

TEL: 01565 722338
www.thesmokerplumley.co.uk

Enjoy
25% OFF
your total food bill

*Offer valid until 10th June (inclusive).
Excludes Bank Holidays. Terms &
Conditions Apply. LPCM/2024*

ST. OSWALD'S CHURCH

LOWER PEOVER

REMEMBRANCE BOOK

REQUEST FOR ENTRY OF NAME

To: Lower Peover Church

Please enter the following name in the Remembrance Book:

.....

Age:

Date of Death.....

Fee £40.00 Enclosed

Signed.....

Date.....

Name and Address.....

.....

.....

Telephone No.

Please return to:

Norman Withenshaw, Tabley Brook Cottage, Pickmere Lane, Tabley,
Knutsford, Cheshire. WA16 0HS (Tel 01565 652400 / 07771 651888)

Date Entered (official use only)

The Bells of Peover



Introducing our irresistible set-lunch menu.

2-Courses: £15.95

3-Courses: £19.95

Pub Classics: £11.00

Upcoming events:



May Day Bank Holiday:

Monday 6th
May 2024



Seafood Food & Wine Pairing:

Wednesday 15th
May 2024



7-Course Taster Menu:

Wednesday 12th
June 2024

BOOK YOUR TABLE NOW



01565 722269



info@thebellsopheover.com



thebellsopheover.com